



1401 St. Charles Road
Maywood, IL 60153



JANUARY VALUES FROM



Pricing good through 1/31/11 or while supplies last.

AETNA HELPFULL HINTS

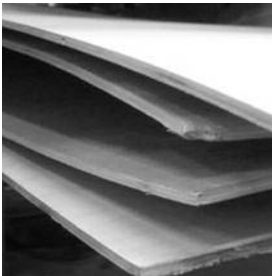
A change in the weather



Wood is a "hygroscopic" material. Simply put, that means it freely gives off or takes on water as conditions around it change. Both wood and air have some amount of water in them. Water tends to move quite freely from the "wetter" of the two to the "drier." Water in air is expressed as humidity, but because the amount of water air can hold varies with the temperature of the air, the percentage of water in the air at a given temperature is called relative humidity.

During extremely cold weather, air in the workplace or in a home or office is heated to a comfortable level. This increases the amount of water the air can hold, but unless moisture is simultaneously added does not change the amount of water actually in the air, thus decreasing the relative humidity. When relative humidity drops below 25% at a room temperature of 65 degrees F or higher, the air will seek moisture from other sources, and the most common source is, you guessed it, wood!

Warping

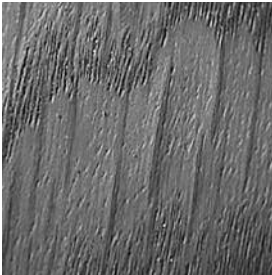


Warp is any deviation from a flat plane. In a hardwood plywood panel or component, that means that one or more corners of the panel or part will not touch a flat surface. Cupping (across the grain), bowing (parallel to the grain), and twisting (spiral to the grain) are all reported. In fabrication, this is usually observed as the panels are being sawn to component size. In the home or office, it is usually observed in free attached components such as doors or shelves.

The primary cause for warp is the dimensional change that takes place when wood gives off water as would be expected during the coldest, driest parts of the year when heating inside air is more likely. This is aggravated by the fact that wood gives off surface moisture first, thus leaving a mild to severe imbalance of moisture in the panel. Add to this the fact that one side of the panel or component is typically more protected than the other when panels are stacked with the face up or doors are mounted

with one side facing the room and the other facing the inside of the cabinet.

Checking



Checks, also called splits or cracks, occur when dimensional change as a result of moisture movement described above creates stresses beyond the resistance capacity of the wood in question.

Checks usually occur parallel to the grain in species like maple or birch because this is where their weakest resistance to stress exists. Movement that takes place in the substrate directly under the face will not normally manifest itself by checking across the grain of the face, but in the case of highly ring porous woods like red oak or even ash, the checks may develop across the weaker areas of early growth (the coarse textured wood).

What to do

Ok, so how do we avoid warping and checking? There are many things that can be done, but the most important are:

Ensure proper gluing instructions are followed

- Avoid lengthy warehouse time at the manufacturing facility
- Avoid lengthy delivery times
- Store wood in climate controlled warehouses at the distribution level and fabricator site
- Allow panels to acclimate to any new environment prior to processing
- Where possible, stack components face to face on uniform thickness pallets or runners and weight the stacks down with a reasonable weight between processes
- Maintain operating conditions between 30 and 60% relative humidity and 65 degrees to 75 degrees F in production and service
- Avoid installing any finished product on site until the heating and cooling systems are up and running, and even then allow the panels or finished goods to acclimate to the new environment before installing
- Seal all surfaces equally
- Allow for linear expansion in the design of the finished product - avoid nailing, screwing, or gluing panels in place wherever feasible, opting for free hanging installation utilizing "Z" clip hangers or equivalent, especially on thicker panels.
- Make sure any drywall, mortar, concrete, or plaster surfaces are completely dry and sealed before installing panels, cabinets, or fixtures

Unfortunately, given the number of variables involved, even the above outlined precautions cannot guarantee against all warping and checking. However, having an understanding around the natural movement of water into and out of wood, coupled with these precautions will greatly minimize the potential for either.

AETNA MANUFACTURES

Slot-wall

TO MEET ALL YOUR NEEDS

Specification:

- **Face Materials**—Hardwood veneers, high pressure laminate, melamine, MDF Paint Grade
- **Groove Spacing**—Standard spacing is 3" O.C. Customized spacing is available in other configurations
- **Sizes**—Standard size is 48" x 96". Virtually any special size is available on custom orders
- **Thicknesses**—Standard is 3/4". For divider panels and displays, 1-1/2" panels grooved on two sides are available on custom orders
- **Substrate**—MDF (Medium Density Fiberboard) with internal bond of 100p.s.i.

More than 25 years of experience in manufacturing slot-wall and millions of square feet in the field indicates that *Aetna Slot-wall* will perform to your complete satisfaction.

Call for your competitive quote today!

***D.R.I.V.E.*™ Dedication • Resource • Inventory • Value-added • Experience**

**FOR INFORMATION, CONTACT YOUR AETNA PLYWOOD REPRESENTATIVE AT 708-343-1515
FAX YOUR ORDERS TO (WOOD) 708-343-1616 OR (LAMINATE) 708-343-1333.**

YOU SHOULD BE LOOKING AT OUR RADIATTA PINE PLYWOOD

CODE	ITEM	PLYS	UNIT SIZE	PCS	1 UNIT	2+ UNITS
03 08 463	7/32" 4 x 8 AC	3	146	\$19.50 ea.	\$18.00 ea.	\$17.00 ea.
03 12 469	11/32" 4 x 8 AC	4	108	\$19.50	\$18.00	\$17.00
03 14 463	15/32" 4 x 8 AC	5	80	\$21.00	\$20.00	\$19.00
03 18 463	19/32" 4 x 8 AC	5	65	\$26.50	\$24.50	\$23.00
03 22 463	23/32" 4 x 8 AC	7	54	\$30.50	\$28.25	\$26.50

A face: 6 or less wood patches (clear, no patch faces). Sanded with 150 grit paper.
C back: small amount open defects allowed. Sanded with 120 grit paper.

- Phenolic Glue
- Radiata Pine grain does not telegraph
- Very tight edges
- +/- .4mm (1/64) thickness tolerance
- TECO certified
- Well sanded, no torn grain
- Stays Flat
- Cuts easily without splintering
- Very few core voids and splice gaps
- Uniform color

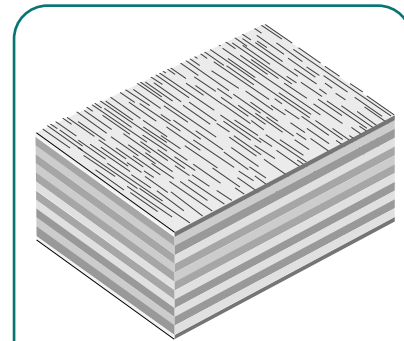
Pricing good through January 31, 2011 as supplies last.

***D.R.I.V.E.™* Dedication • Resource • Inventory • Value-added • Experience**

**FOR INFORMATION, CONTACT YOUR AETNA PLYWOOD REPRESENTATIVE AT 708-343-1515
FAX YOUR ORDERS TO (WOOD) 708-343-1616 OR (LAMINATE) 708-343-1333.**

AETNA PLYWOOD IS STOCKING APPLEPLY®

ApplePly® is a premium quality veneer core panel constructed from uniform laminations of solid grade 1/16" Alder and Birch. This all hardwood core produces a strong, lightweight panel with a minimum number of voids and a naturally attractive edge. ApplePly is available from 1/4" through 1-1/4" in thickness and 48" X 96" and 48" X 120" panels.



ApplePly's uniformly thin plies of light colored alder and birch give it a visually attractive edge. The strong pattern of the edge is often used as a design element.

APPLEPLY® IS FSC CERTIFIED

IN STOCK

CODE	ITEM	1 -10	11 +
06 08 304	1/4" 4 x 8 R/C White Maple A/2 WPF VC	\$ 91.50 ea.	\$ 85.30 ea.
06 14 300	1/2" 4 x 8 R/C Natural Maple C/2 VC	\$ 81.00	\$ 75.60
06 22 300	3/4" 4 x 8 R/C Natural Maple C/2 VC	\$112.90	\$105.40
06 22 304	3/4" 4 x 8 R/C White Maple A/1 WPF VC	\$132.90	\$124.05

ATTRACTIVE EDGES

Uniformly thin core veneers laminated at right angles produces an attractive visual edge that is often used as a primary design element in furniture, fixtures and architectural installations. ApplePly® is also popular for use as drawer sides because of its appearance when left unbanded. Alternating end grain and edge grain absorbs stain and finish at different rates, producing a pleasing light and dark layered effect.

IMPROVED MACHINABILITY

Because ApplePly® is made from low density hardwood veneers, and because it has few voids, it machines beautifully without tearing or fuzzing effect. For example, bull nosed draw edges with Appleply® are a popular application

Pricing good through January 31, 2011 as supplies last.

///D.R.I.V.E.™ Dedication • Resource • Inventory • Value-added • Experience

**FOR INFORMATION, CONTACT YOUR AETNA PLYWOOD REPRESENTATIVE AT 708-343-1515
FAX YOUR ORDERS TO (WOOD) 708-343-1616 OR (LAMINATE) 708-343-1333.**

PREMIER® FIRE RATED MDF

When you need a flame-retardant MDF solution for your paneling, cabinetry, shelving, trim and furniture needs, Flakeboard Premier® FR MDF is best in class. Our Class A/Class 1 rated fire-retardant MDF panels are ideal for interior, non-structural use in public areas such as schools, hotels, hospitals and restaurants.

Premier® FR MDF's design flexibility and workability make it an ideal choice for a variety of applications

Flakeboard Premier® FR MDF delivers:

- Smooth surface properties for painting or laminating
- Dense, flat surfaces for easy machining
- Uniform fibre distribution and texture
- Sharp edges and strong internal bond
- Good acoustical dampening properties
- The right thickness for thick board applications

Aetna Plywood stocks an extensive inventory of PREMIER® FIRE RATED MDF

Stocked Sizes				
3/8"	4 x 8'			
1/2"	4 x 8'	5 x 8'	4 x 10'	
5/8"	4 x 8'			
11/16"	4 x 8'	5 x 8'	4 x 10'	5 x 10'
3/4"	4 x 8'	5 x 8'	4 x 10'	5 x 10'

Other sizes and thicknesses may also be available — *Please call*

- FSC certified is also available
- Please refer to manufacturer's Specifications and Product Limitations prior to using this product

USAGE NOTES

Some laminates and coatings applied to Premier® FR MDF may change the flame spread rating. Standard available woodworking glues have been successfully used in lamination. Any adhesive should be tested for compatibility with the chemical system in Premier® FR MDF prior to full-scale gluing. Questions should be directed to the glue supplier.

D.R.I.V.E.™ *Dedication • Resource • Inventory • Value-added • Experience*

FOR INFORMATION, CONTACT YOUR AETNA PLYWOOD REPRESENTATIVE AT 708-343-1515

FAX YOUR ORDERS TO (WOOD) 708-343-1616 OR (LAMINATE) 708-343-1333.



VESTA NO ADDED UREA-FORMALDEHYDE RESIN PARTICLEBOARD

VESTA is a specialty particleboard manufactured using a no added urea-formaldehyde resin system. This makes it the optimal choice for additional LEED points, and other no added urea-formaldehyde resin specified projects.

Along with our other panel products, **VESTA** is made with 100% recycled and/or recovered wood fiber, and is an EPP environmentally certified product.

VESTA is available in a wide range of thicknesses and dimensions, and can be raw, **TFM** or **WRM** finished with your choice of design from the Flakeboard collection.

Aetna Plywood stocks an extensive inventory of FLAKEBOARD VESTA - NAUF PARTICLEBOARD

Stocked Sizes						
1/2"	4 x 8'		4 x 10'			
5/8"	4 x 8'					
11/16"	4 x 8'	5 x 8'	4 x 10'	5 x 10'	4 x 12'	5 x 12'
3/4"	4 x 8'	5 x 8'	4 x 10'		4 x 12'	5 x 12'

Other sizes and thicknesses may also be available — *Please call*

- FSC certified is also available
- Please refer to manufacturer's Specifications and Product Limitations prior to using this product

Flakeboard particleboard is manufactured to strict quality control standards with recycled and recovered wood fiber. These products may contribute towards specific credits under the US Green Building Council (USGBC) Leadership in Energy & Environmental Design (LEED) criteria.

D.R.I.V.E.™ *Dedication • Resource • Inventory • Value-added • Experience*

OLON

It all comes together



VINYL-CLAD DRAWER BLANKS

Improve Your Quality • Cut Your Costs

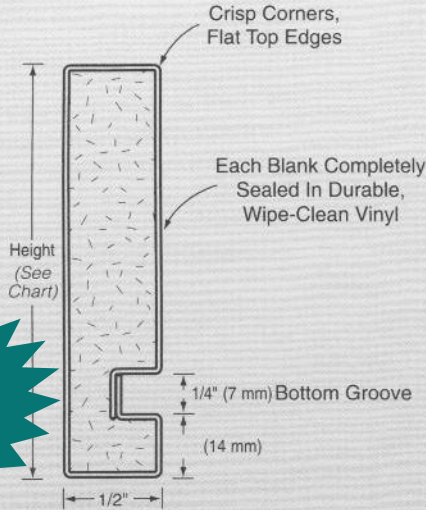


The Vinyl-Clad Advantage

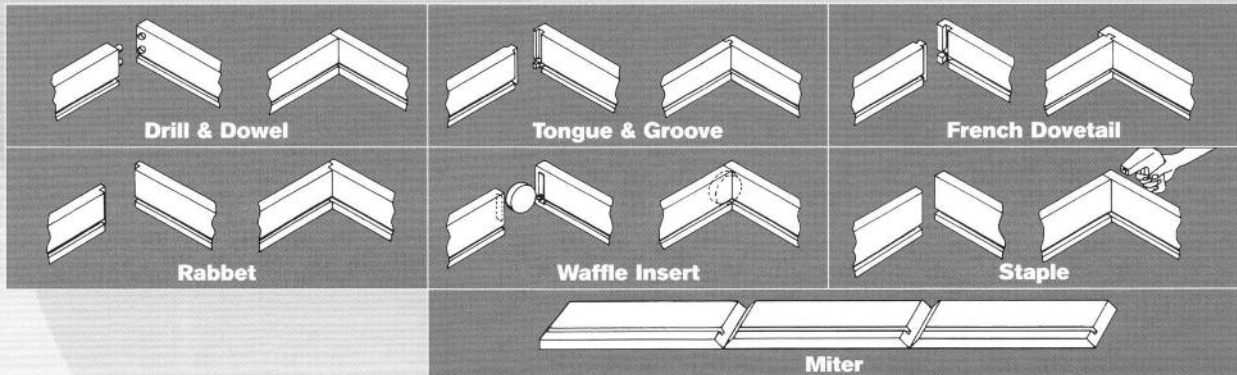
- Vinyl is fully wrapped 360° around the drawers into the groove
- Moisture and stain resistant
- Reduced labour costs
- Durable surface wipes clean in seconds
- Avoids time-consuming expensive finish application
- No edgebanding
- Snag-free interiors
- Crisp, professional look
- No groove routing required

SPECIFICATIONS

Length 8'
 Thickness 1/2"
 Height 3", 4", 5", 5 1/2", 6", 7", 8", 9 1/16", 10"
 Colours **White (Std.)**, Oak, Dark Maple, Black, Sycamore, Alder, White and Dark Maple Polypropylene



In-Stock Now!



PRODUCT CODE	PCS / BOX	DESCRIPTION	SIZE	1 BOX	2 BOXES
15 14 760	20	White Vinyl Drawer Blanks	4" x 96"	\$4.69/pc	\$4.39/pc
15 14 764	10	White Vinyl Drawer Blanks	6" x 96"	\$7.21/pc	\$6.76/pc
15 14 765	10	White Vinyl Drawer Blanks	8" x 96"	\$9.33/pc	\$8.75/pc
15 14 766	10	White Vinyl Drawer Blanks	10" x 96"	\$11.56/pc	\$10.84/pc
15 14 768	20	Dark Maple Vinyl Drawer Blanks	4" x 96"	\$5.31/pc	\$4.98/pc
15 14 769	10	Dark Maple Vinyl Drawer Blanks	6" x 96"	\$8.17/pc	\$7.66/pc
15 14 773	10	Dark Maple Vinyl Drawer Blanks	8" x 96"	\$10.57/pc	\$9.91/pc
15 14 774	10	Dark Maple Vinyl Drawer Blanks	10" x 96"	\$13.14/pc	\$12.32/pc

Pricing good through January 31, 2011 as supplies last.

D.R.I.V.E.™ Dedication • Resource • Inventory • Value-added • Experience

FOR INFORMATION, CONTACT YOUR AETNA PLYWOOD REPRESENTATIVE AT 708-343-1515

FAX YOUR ORDERS TO (WOOD) 708-343-1616 OR (LAMINATE) 708-343-1333.

SAVE MONEY NOW BEFORE THE PRICE INCREASE ON TOP SELLERS FROM WILSONART

COMMODITY-VALUE LAMINATE

Aetna's "Commodity-Value Laminates" are still on sale! You can still order the 12 of your best-selling items at Discounted Prices before the increase.

Four best-selling woodgrains for cabinetry and casegoods,
(Fusion Maple, Wild Cherry, Kensington Maple & Limber Maple)

Six solid colors you use everyday,
(Frosty & Designer Whites, Black, Almond, Antique White, and Fashion Grey)

and Two of your favorite patterns
(Graphite and Grey Nebula)

<i>"Everyday low pricing"</i>	Vertical Grade #335 4' x 8' sheets	Standard Grade #107 all factory sizes
1 – 20 pieces	\$.71 psf	\$.81 psf
21 – 99 pieces	\$.67	\$.77
100+ pieces	\$.64	\$.73

Be sure to "mix & match" to get the lowest price !!!!!

BASIC—VALUE LINER/LAMINATE

Our BASIC-Laminates are also discounted prior to the increase. Now is the time to "stock up" on the 5 solid color liner/laminate options.



1-24 pcs @ 39 cents psf
 25-49 @ 35 cents
 50-99 @ 33 cents
 100-399 @ 31 cents
 400 pc skid @ 29 cents

(White, Bright White, Black, Almond and Grey)

Pricing good through January 31, 2011 as supplies last.

D.R.I.V.E. Dedication • Resource • Inventory • Value-added • Experience

FOR INFORMATION, CONTACT YOUR AETNA PLYWOOD REPRESENTATIVE AT 708-343-1515
 FAX YOUR ORDERS TO (WOOD) 708-343-1616 OR (LAMINATE) 708-343-1333.

WELCOME TO 2011 AT 2010 PRICES!

WILSONART MARKER BOARD NOW YOU SEE IT — NOW YOU DON'T

- For use with dry erase markers — leaves no “ghosts” or “halos”
- GREENGUARD Certified as a low emitting product
- Easy to fabricate — no special tooling required
- Frosty White in stock for Next Day Delivery

NEW color available—Black 1595-9 for use with Neon Markers!

Frost White 1573-9 Stock Program	1-14 pieces	\$2.24 psf
	15+ pieces	\$1.99



WILSONART Decorative Metals “Looks that kill — Prices that won’t”

- Brilliant decorative metals — all the top-selling styles & finishes
- Anodized aluminum #419 for vertical applications, .025" thick
- 4' x 8' sheets — All in stock for immediate delivery
- **Value Priced to Reduce Your Costs** compared to other brands

AlumaSteel #6277 (compare to Chemetal® 927)	\$ 2.52 psf
Brushed Natural Aluminum #6256 (compare to Chemetal® 902)	\$ 2.52
Satin Brushed Aluminum #6257	\$ 2.52
Matte Natural Aluminum #6252 (compare to Chemetal® 909)	\$ 2.52

(Chemetal® item numbers for reference only. Visually inspect samples and make your own comparisons prior to ordering, fabrication and installation.)

PolyBak Backers vs. Paper Backers “Once you switch, you’ll never switch back”

	Typical paper backer	PolyBak RESIN-IMPREGNATED
GreenGuard	Probably Not	YES
Formaldehyde	usually	NONE ADDED
Flexibility	Poor	Great, easy-to-use to reduce damage & waste
Stock Sizes	Usually 1	Aetna has 9 in stock to improve your yield
Thickness	Usually .020"	PB90 is .024" thick
Tensile Strength	Very Low	Very High, nearly the same as phenolics
Moisture Resistance	Terrible, over 60%	Excellent, less than 25%

10 – 14 pcs.	15 – 24	25 – 49	50 – 99	100 – 249	250
\$.31 psf	\$.28 psf	\$.26 psf	\$.24 psf	\$.21 psf	\$.18 psf

Pricing good through January 31, 2011 as supplies last.

D.R.I.V.E.™ Dedication • Resource • Inventory • Value-added • Experience

**FOR INFORMATION, CONTACT YOUR AETNA PLYWOOD REPRESENTATIVE AT 708-343-1515
FAX YOUR ORDERS TO (WOOD) 708-343-1616 OR (LAMINATE) 708-343-1333.**